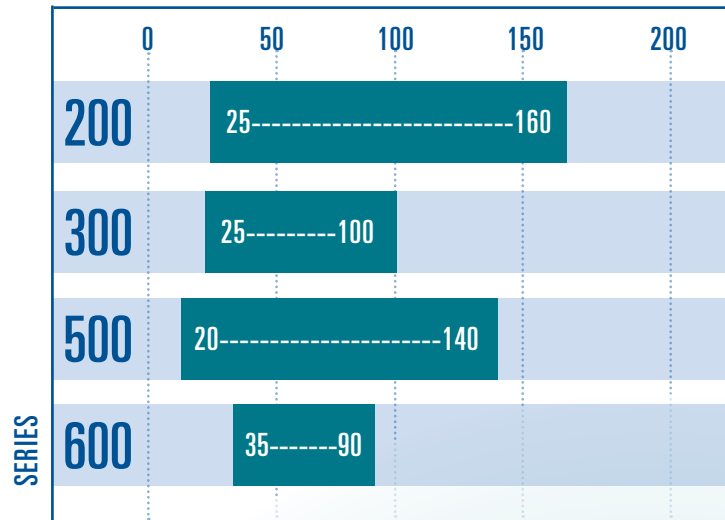
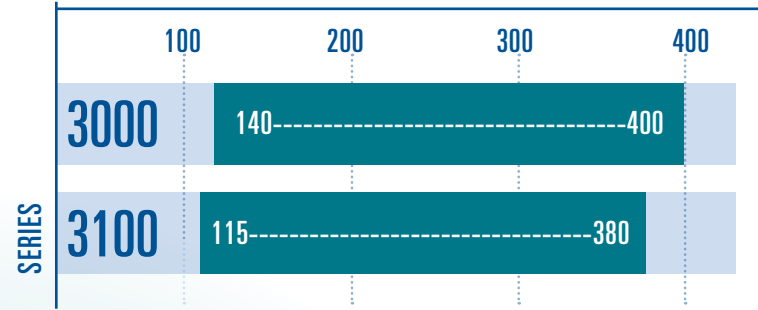


## TIMKEN SNT HOUSED UNIT SIZE RANGE

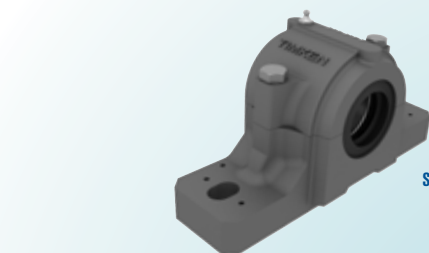
SHAFT SIZE (MM)



SHAFT SIZE (MM)



TIMKEN OFFERS A WIDE RANGE OF HOUSED UNITS THAT HANDLE DEMANDING HEAVY-INDUSTRIAL OPERATIONS



**SNT PILLOW BLOCK HOUSED UNIT**  
shaft sizes from 20 to 400 mm



**SAF PILLOW BLOCK HOUSED UNIT**  
shaft sizes from 1-3/8 to 19 1/2 in



**SOLID-BLOCK SPHERICAL ROLLER BEARING HOUSED UNIT**  
shaft sizes from 40 to 180 mm; 1-7/16 to 7 in



**TYPE E TAPERED ROLLER BEARING HOUSED UNIT**  
shaft sizes from 35 to 125mm; 1-3/16 to 5 in



**BALL BEARING HOUSED UNIT**  
shaft sizes from 17 to 75 mm; 1/2 to 3 in

### INDUSTRIES AND APPLICATIONS

- Power Generation (Coal)
- Mining
- Aggregate/Cement
- Metal Mills
- Pulp & Paper/Sawmills/Forestry
- Water Treatment
- Food Processing
- Warehousing
- Movable Bridges/Structures
- Industrial Fans/Blowers

### CALL ON TIMKEN

For your nearest Timken sales representative, visit [www.timken.com](http://www.timken.com)

# TIMKEN

The Timken team applies their know-how to improve the reliability and performance of machinery in diverse markets worldwide. The company designs, makes and markets high-performance steel as well as mechanical components, including bearings, gears, chain and related mechanical power transmission products and services.

[www.timken.com](http://www.timken.com)

Stronger. Commitment. Stronger. Value. Stronger. Worldwide. Stronger. Together. | Stronger. By Design.

# TIMKEN

## TIMKEN® SNT PILLOW BLOCK HOUSED UNITS

Iron-clad protection for enhanced reliability

IT'S A TOUGH WORLD OUT THERE. PROTECT YOUR BEARINGS.

Timken® high performance spherical roller bearings run cooler and last longer thanks to enhanced geometries and innovative design features. Get the most from your bearings by protecting them with Timken® SNT pillow block housed units and seals.

Uptime is your key to success even as you push equipment harder than ever before. Improve efficiency and increase return on investment with tough Timken housings and durable sealing options to keep contamination out and lubrication in.

### COMMITTED TO PERFORMANCE

Timken SNT metric pillow block housed units deliver engineering expertise and Timken quality every step of the way.

**CAST IRON HOUSINGS:** Durable design protects the bearing while withstanding the harshest environments.

**TIMKEN SPHERICAL ROLLER BEARINGS:** Premium performance with lower operating temperatures and increased load carrying capacity.

**SEAL OPTIONS:** Four types of seals available to meet your application needs. Choose from double-lip, labyrinth, V-ring or taconite designs.

**GLOBAL AVAILABILITY:** Global distribution network makes it easy to get Timken anywhere in the world fast.

01-13-20 | Timken® is a registered trademark of The Timken Company. | © 2012 The Timken Company | Printed in U.S.A.

## MORE OPTIONS AND MORE PERFORMANCE FROM TIMKEN SNT UNITS

Timken provides the technical expertise and broad range of product options to help engineers, contractors, maintenance professionals and others choose the optimal assemblies and components for each task. We are committed to helping you enhance your organization's productivity and safety.

**OPTIONAL END CAPS**  
Avoid damage to bearing and housing. Easy to install and remove.

**SPLIT-BLOCK HOUSINGS**  
Precision-fit matched cap-and-base with dowel pins provides proper bearing support. Simplifies alignment and installation of heavy housings. Convenient pry-tool slots for easy cap removal speeds bearing inspection and replacement.

**TIMKEN® SPHERICAL ROLLER BEARINGS**  
Increase reliability with high-performance bearing that runs cooler for longer bearing life. Allows 1.5 degrees of misalignment.

**STEEL LOCATING RINGS**  
Provide flexibility to fix or float the bearing.

**TAPERED ADAPTER OR STRAIGHT BORE MOUNTING**  
Secure each bearing onto the shaft.

**STANDARD METRIC MOUNTING DIMENSIONS**  
Easy to install with same dimensions as industry norms for bolt holes, center heights and shaft diameters. Conform to ISO 113:1999.

**CAST-IRON**  
Rugged cast-iron is well-suited for harsh industrial applications. Available in steel or ductile iron.

**SEAL OPTIONS**  
Protect the bearing with double-lip, labyrinth, V-ring and taconite sealing options.

## SNT NOMENCLATURE - 200, 300, 500, 600 SERIES

**HOUSING STYLE**

**SNT**

- Blank = 2-Bolt base
- F = 4-Bolt base
- S = Countersink for customer machined thru holes
- Blank = Cast iron
- S = Steel
- D = Ductile iron

**HOUSING SIZE**

**5 1 2 - 6 1 0**

- 5 = Medium Duty Bearing Bore<sup>(1)</sup>
- 1 2 = Housing series: 2 = 200, 3 = 300, 5 = 500, 6 = 600
- 6 = Heavy Duty Bearing Bore<sup>(1)</sup>

1. Bearing Bore = Number x 5

**LOCATING RING\***

**SR 1 10 X 10.5**

- SR = Steel
- 1 = OD (mm)
- 10 = Width (mm)
- 10.5 = Width (mm)

\*Two locating rings included

**SLEEVE**

**H 3 1 0**

- H = Pull Sleeve
- 3 = Housing series: 2 = 200, 3 = 300, 5 = 500, 6 = 600
- 1 = Bore Code
- 0 = Housing size

HM310 contains adapter sleeve, locknut, and lock washer

**SEAL**

**TSNG 6 1 0**

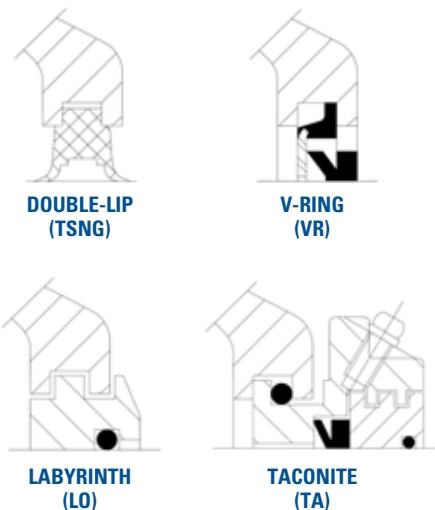
- TSNG = Double-lip
- 6 = Housing series: 2 = 200, 3 = 300, 5 = 500, 6 = 600
- 1 = Bearing Bore<sup>(4)</sup>
- 0 = Housing size

LO = Labyrinth w/ o-ring  
VR = V-ring  
TA = Taconite  
FL = Felt strip  
EC = End cover

## FLEXIBLE CONFIGURATIONS

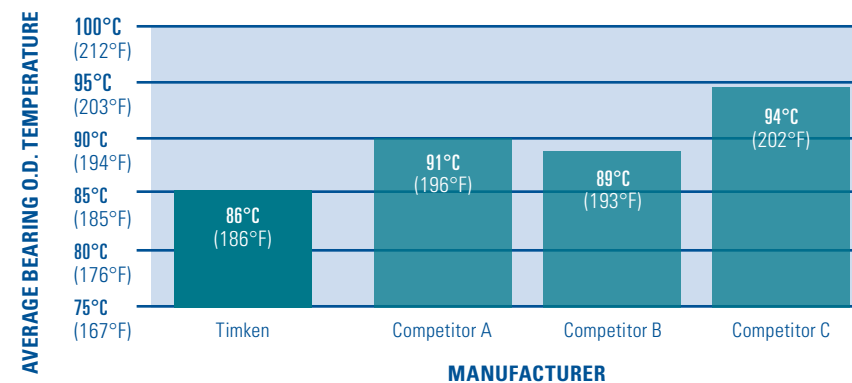
Timken® SNT Pillow blocks provide options to meet your needs. Depending on the accessories you choose, a single housing can be used with multiple bearings, in fixed or float positions and open or closed end caps.

### SEAL OPTIONS



### COOLER THAN THE COMPETITION

Lower operating temperatures increase bearing life by increasing lubricant life. A 5°C decrease in operating temperature can translate to 9 percent longer bearing life. In tests, Timken spherical roller bearings ran at consistently lower temperatures than same-size competitive bearings.



### SNT 512-610



BEARING: 21310K LOCATING RINGS: SR110 X 10.5 SLEEVE: H310	BEARING: 22310K LOCATING RINGS: SR110 X 4 SLEEVE: H2310	BEARING: 22212K LOCATING RINGS: SR110 X 10 SLEEVE: H312
<b>SEAL OPTIONS</b> <b>DOUBLE-LIP:</b> TSNG610 <b>LOR:</b> LO610 <b>V-RING:</b> VR610 <b>TACONITE:</b> TA610 <b>END COVER:</b> EC512-610	<b>SEAL OPTIONS</b> <b>DOUBLE-LIP:</b> TSNG610 <b>LOR:</b> LO610 <b>V-RING:</b> VR610 <b>TACONITE:</b> TA610 <b>END COVER:</b> EC512-610	<b>SEAL OPTIONS</b> <b>DOUBLE-LIP:</b> TSNG512 <b>LOR:</b> LO512 <b>V-RING:</b> VR612 <b>TACONITE:</b> TA512 <b>END COVER:</b> EC512-610