



TRANSMISSIONS



Mechanical Power Transmission



Agriculture



Automotive



Construction



Industrial



Motor Sport

WE LOVE OUR PRODUCTS.

“We are proud to be a European manufacturer; it is a privilege to supply our products to some of the world’s most prestigious original equipment manufacturers in the Agricultural, Automotive, Construction, Industrial and Motor Sport sectors”.

“Our distributor network is vital to the continued global growth of the DUNLOP brand and our valued distributor partners form the perfect link between manufacturer and end user”.

“Our commitment to our staff, our customers and the environment is of paramount importance to our company, we will continue to develop our organisational skills to further enhance our company’s potential, to engage in sustainable practices and anticipate the needs and expectations of our customers”.

“We love our products”.

Ray Mifsud, Managing Director.

A handwritten signature in black ink, appearing to read 'R. Mifsud', is positioned to the right of the printed name.



**Dunlop BTL Ltd - Ashford
European Distribution Centre**

MPT House, Brunswick Road
Cobbs Wood Industrial Estate
Ashford, Kent
TN23 1EL , United Kingdom

**Dunlop BTL Ltd - Consett
UK Manufacturing Centre**

Unit 46, Werdolh Way,
No 1 Industrial Estate,
Consett, County Durham
DH8 6SZ , United Kingdom



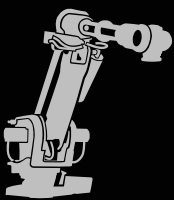
Contact us

-  +44 (0)1233 663340
-  +44 (0)1233 664440
-  sales@dunlopctl.com
-  www.dunlopctl.com



Manufacturing Facilities

- UNITED KINGDOM
- FRANCE
- GERMANY
- ITALY
- SPAIN
- POLAND
- CZECH REPUBLIC
- SLOVAKIA
- SERBIA
- CHINA
- USA





Manufacturing Facilities, Consett, Co. Durham UK

Unit 46, Werdolh Way,
No 1 Industrial Estate,
Consett, County Durham
DH8 6SZ , United Kingdom

European Distribution Centre, Ashford, Kent UK

MPT House, Brunswick Road
Cobbs Wood Industrial Estate
Ashford, Kent
TN23 1EL , United Kingdom








“We are proud to be a European manufacturer; it is a privilege to supply our products to some of the world’s most prestigious original equipment manufacturers in the Agricultural, Automotive, Construction, Industrial and Motor Sport sectors”.

“Our distributor network is vital to the continued global growth of the DUNLOP brand and our valued distributor partners form the perfect link between manufacturer and end user”.

“Our commitment to our staff, our customers and the environment is of paramount importance to our company, we will continue to develop our organisational skills to further enhance our company’s potential, to engage in sustainable practices and anticipate the needs and expectations of our customers”.

“At Dunlop BTL we love our products”.

Ray Mifsud, *Managing Director.*

	English
	Español
	Italiano
	Deutsch
	Français
	Nederlands
	Polskie

Engineering Data 74

Datos de ingeniería • Dati ingegneristici • Technische gegevens
 Données d'ingénierie • Technische gegevens • Dane Inżynieria

J - Section 75

J - sección • J - sezione • J - Bereich
 J - section • J - sectie • J - Sekcja

K - Section 76

K - sección • K - sezione • K - Sektion
 K - section • K - sectie • K - Sekcja

L - Section 77

L - sección • L - sezione • L - Sektion
 L - section • L - sectie • L - Sekcja

M - Section 78

M - sección • M - sezione • M - Sektion
 M - section • M - sectie • M - Sekcja



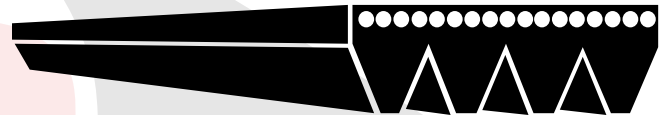
MICRO (POLY) V-BELTS

DUNLOP Micro V Belt combine high flexibility and the light weight of flat belts with the grip of V-Belts, this creates a high power rated special rib profile.

Micro V-Belts are endless rubber belts with longitudinal V shaped grooves. They transmit the motor power by friction from the driver to the driven side of a machine, giving the following advantages:

CONSTRUCTION AND FEATURES

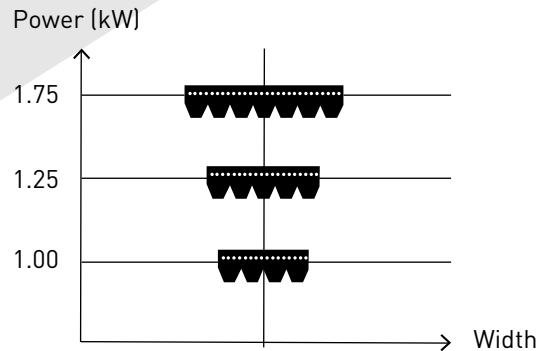
- The top layer is fabric-reinforced resisting reverse bending and possible wear caused by a back idler.
- The specially treated high-strength tensile member withstands the stresses with reduced and stable elongation.
- The longitudinally ribbed high-grip elastomer base offers a large contact surface.
- Compact smooth running drive system with low vibration.
- Difficult drive configurations such as serpentine or twisted drives, can be designed due to the high flexibility.
- Good resistance to mineral oils and temperatures between -30°C and +60°C (+80°C for short periods).
- Suitable for environments of high humidity.
- Suitable for H, J, K, L and M pulley profiles as specified in DIN 7867 and ISO 9982 and are also suitable for pulley profiles as specified in RMA IP26 and ASAE S 211.5 standards.
- Meets ISO standard 1813 for static conductivity.



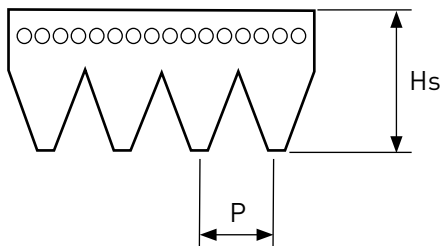
APPLICATIONS

For a given application, the belt is cut to the required number of ribs thus closely matching the required power rating. This makes it possible to obtain a unique, customised belt with optimum overall size.

The key qualities of DUNLOP Micro V belts are that for a given application vibrations are reduced and there is no need for the matching of sets.



PHYSICAL CHARACTERISTICS



	H	J	K	L	M
Centre distance P (mm)	1.60	2.34	3.56	4.70	9.40
Height Hs (mm)	3.0	3.5	6.0	9.5	16.5
Weight per rib (g/m)	5.9	8.4	20	30.9	124.1
Min. pulleys diameter (mm)	13	20	40	75	180
Min. reverse bend diameter (mm)	32	45	70	140	300

The belt code refers to the effective length in millimetres measured at the top of the pulleys, i.e. at the root of the belt ribs.



MICRO V-BELTS



MICRO V-BELTS

Description

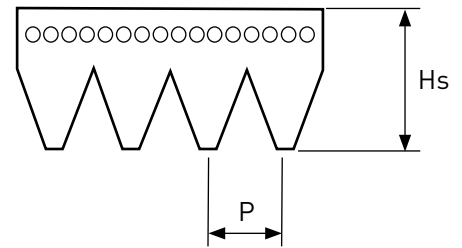
High Performance Micro V-Belts in endless construction and with triangular ribs running along the length of the belt, the entire power is transmitted by a single belt.

Drives can be reduced in size when compared with traditional V-belt drives as smaller pulleys can be used that will transmit equal or higher loads thereby reducing space requirements and cost.

Higher ratios and increased belt speeds can also be achieved.

Part numbers are identified by a 3 or 4 digit number (e.g. 1321) which represents the nominal length in mm, a letter (e.g. J) the cross section and a 2 digit number (e.g. 08) the number of ribs. 1321J08 etc.

Part No.	BELT TYPE	
	PITCH	Hs
J	2.34	4.00
K	3.56	5.50
L	4.70	9.50
M	9.40	16.70



J CROSS SECTION

Part No.	Effective Length (mm)	Effective Length (inches)
197J/RIB	197	7.8
207J/RIB	207	8.1
234J/RIB	234	9.2
254J/RIB	254	10.0
267J/RIB	267	10.5
274J/RIB	274	10.8
288J/RIB	288	11.3
300J/RIB	300	11.8
305J/RIB	305	12.0
330J/RIB	330	13.0
350J/RIB	350	13.8
356J/RIB	356	14.0
381J/RIB	381	15.0
406J/RIB	406	16.0
428J/RIB	428	16.9
432J/RIB	432	17.0
457J/RIB	457	18.0
483J/RIB	483	19.0
495J/RIB	495	19.5
508J/RIB	508	20.0
533J/RIB	533	21.0
559J/RIB	559	22.0
584J/RIB	584	23.0
610J/RIB	610	24.0
635J/RIB	635	25.0
650J/RIB	650	25.6
660J/RIB	660	26.0
685J/RIB	685	27.0

Part No.	Effective Length (mm)	Effective Length (inches)
711J/RIB	711	28.0
723J/RIB	723	28.5
726J/RIB	726	28.6
737J/RIB	737	29.0
762J/RIB	762	30.0
769J/RIB	769	30.3
787J/RIB	787	31.0
790J/RIB	790	31.1
813J/RIB	813	32.0
838J/RIB	838	33.0
864J/RIB	864	34.0
889J/RIB	889	35.0
895J/RIB	895	35.2
914J/RIB	914	36.0
938J/RIB	938	36.9
944J/RIB	944	37.2
955J/RIB	955	37.6
960J/RIB	960	37.8
965J/RIB	965	38.0
990J/RIB	990	39.0
995J/RIB	995	39.2
1016J/RIB	1016	40.0
1036J/RIB	1036	40.8
1040J/RIB	1040	40.9
1051J/RIB	1051	41.4
1054J/RIB	1054	41.5
1059J/RIB	1059	41.7
1065J/RIB	1065	41.9

Part No.	Effective Length (mm)	Effective Length (inches)
1067J/RIB	1067	42.0
1080J/RIB	1080	42.5
1089J/RIB	1089	42.9
1092J/RIB	1092	43.0
1100J/RIB	1100	43.3
1105J/RIB	1105	43.5
1108J/RIB	1108	43.6
1110J/RIB	1110	43.7
1116J/RIB	1116	43.9
1118J/RIB	1118	44.0
1123J/RIB	1123	44.2
1126J/RIB	1126	44.3
1130J/RIB	1130	44.5
1136J/RIB	1136	44.7
1143J/RIB	1143	45.0
1150J/RIB	1150	45.3
1160J/RIB	1160	45.7
1168J/RIB	1168	46.0
1170J/RIB	1170	46.1
1184J/RIB	1184	46.6
1190J/RIB	1190	46.9
1194J/RIB	1194	47.0
1200J/RIB	1200	47.2
1203J/RIB	1203	47.4
1210J/RIB	1210	47.6
1214J/RIB	1214	47.8
1219J/RIB	1219	48.0
1222J/RIB	1222	48.1

J - SECTION continued

Part No.	Effective Length (mm)	Effective Length (inches)
1232J/RIB	1232	48.5
1236J/RIB	1236	48.7
1244J/RIB	1244	49.0
1262J/RIB	1262	49.7
1270J/RIB	1270	50.0
1280J/RIB	1280	50.4
1283J/RIB	1283	50.5
1285J/RIB	1285	50.6
1287J/RIB	1287	50.7
1295J/RIB	1295	51.0
1302J/RIB	1302	51.3
1309J/RIB	1309	51.5
1315J/RIB	1315	51.8
1318J/RIB	1318	51.9
1321J/RIB	1321	52.0
1326J/RIB	1326	52.2
1333J/RIB	1333	52.5
1355J/RIB	1355	53.3
1365J/RIB	1365	53.7
1371J/RIB	1371	54.0

Part No.	Effective Length (mm)	Effective Length (inches)
1397J/RIB	1397	55.0
1428J/RIB	1428	56.2
1439J/RIB	1439	56.7
1461J/RIB	1461	57.5
1473J/RIB	1473	58.0
1524J/RIB	1524	60.0
1549J/RIB	1549	61.0
1600J/RIB	1600	63.0
1626J/RIB	1626	64.0
1651J/RIB	1651	65.0
1663J/RIB	1663	65.5
1702J/RIB	1702	67.0
1752J/RIB	1752	69.0
1778J/RIB	1778	70.0
1854J/RIB	1854	73.0
1895J/RIB	1895	74.6
1910J/RIB	1910	75.2
1930J/RIB	1930	76.0
1956J/RIB	1956	77.0
1960J/RIB	1960	77.2

Part No.	Effective Length (mm)	Effective Length (inches)
1965J/RIB	1965	77.4
1978J/RIB	1978	77.9
1981J/RIB	1981	78.0
1992J/RIB	1992	78.4
2019J/RIB	2019	79.5
2064J/RIB	2064	81.3
2083J/RIB	2083	82.0
2135J/RIB	2135	84.1
2155J/RIB	2155	84.8
2210J/RIB	2210	87.0
2286J/RIB	2286	90.0
2337J/RIB	2337	92.0
2413J/RIB	2413	95.0
2489J/RIB	2489	98.0
2870J/RIB	2870	113.0
3154J/RIB	3154	124.2
3500J/RIB	3500	137.8
4000J/RIB	4000	157.5

K - SECTION

Part No.	Effective Length (mm)	Effective Length (inches)
526K/RIB	526	20.7
560K/RIB	560	22.0
575K/RIB	575	22.6
582K/RIB	582	22.9
597K/RIB	597	23.5
633K/RIB	633	24.9
648K/RIB	648	25.5
655K/RIB	655	25.8
673K/RIB	673	26.5
682K/RIB	682	26.9
698K/RIB	698	27.5
710K/RIB	710	28.0
730K/RIB	730	28.7
740K/RIB	740	29.1
751K/RIB	751	29.6
755K/RIB	755	29.7
770K/RIB	770	30.3
775K/RIB	775	30.5
790K/RIB	790	31.1
805K/RIB	805	31.7
810K/RIB	810	31.9
815K/RIB	815	32.1
818K/RIB	818	32.2
830K/RIB	830	32.7

Part No.	Effective Length (mm)	Effective Length (inches)
841K/RIB	841	33.1
865K/RIB	865	34.1
869K/RIB	869	34.2
870K/RIB	870	34.3
875K/RIB	875	34.4
880K/RIB	880	34.6
884K/RIB	884	34.8
888K/RIB	888	35.0
903K/RIB	903	35.6
915K/RIB	915	36.0
920K/RIB	920	36.2
926K/RIB	926	36.5
938K/RIB	938	36.9
954K/RIB	954	37.6
960K/RIB	960	37.8
970K/RIB	970	38.2
990K/RIB	990	39.0
995K/RIB	995	39.2
1000K/RIB	1000	39.4
1015K/RIB	1015	40.0
1030K/RIB	1030	40.6
1035K/RIB	1035	40.7
1050K/RIB	1050	41.3
1080K/RIB	1080	42.5

Part No.	Effective Length (mm)	Effective Length (inches)
1095K/RIB	1095	43.1
1110K/RIB	1110	43.7
1125K/RIB	1125	44.3
1130K/RIB	1130	44.5
1146K/RIB	1146	45.1
1149K/RIB	1149	45.2
1165K/RIB	1165	45.9
1194K/RIB	1194	47.0
1205K/RIB	1205	47.4
1222K/RIB	1222	48.1
1230K/RIB	1230	48.4
1253K/RIB	1253	49.3
1272K/RIB	1272	50.1
1280K/RIB	1280	50.4
1295K/RIB	1295	51.0
1314K/RIB	1314	51.7
1330K/RIB	1330	52.4
1345K/RIB	1345	53.0
1360K/RIB	1360	53.5
1387K/RIB	1387	54.6
1397K/RIB	1397	55.0
1420K/RIB	1420	55.9
1425K/RIB	1425	56.1
1435K/RIB	1435	56.5

K - SECTION continued

Part No.	Effective Length (mm)	Effective Length (inches)
1460K/RIB	1460	57.5
1479K/RIB	1479	58.2
1496K/RIB	1496	58.9
1520K/RIB	1520	59.8
1530K/RIB	1530	60.2
1549K/RIB	1549	61.0
1560K/RIB	1560	61.4
1570K/RIB	1570	61.8
1580K/RIB	1580	62.2
1601K/RIB	1601	63.0
1610K/RIB	1610	63.4
1626K/RIB	1626	64.0
1630K/RIB	1630	64.2
1645K/RIB	1645	64.8
1658K/RIB	1658	65.3
1664K/RIB	1664	65.5
1682K/RIB	1682	66.2
1700K/RIB	1700	66.9
1725K/RIB	1725	67.9
1750K/RIB	1750	68.9
1760K/RIB	1760	69.3
1775K/RIB	1775	69.9
1795K/RIB	1795	70.7
1815K/RIB	1815	71.5

Part No.	Effective Length (mm)	Effective Length (inches)
1830K/RIB	1830	72.0
1843K/RIB	1843	72.6
1854K/RIB	1854	73.0
1863K/RIB	1863	73.3
1868K/RIB	1868	73.5
1880K/RIB	1880	74.0
1885K/RIB	1885	74.2
1900K/RIB	1900	74.8
1905K/RIB	1905	75.0
1930K/RIB	1930	76.0
1949K/RIB	1949	76.7
1963K/RIB	1963	77.3
1971K/RIB	1971	77.6
1980K/RIB	1980	78.0
2031K/RIB	2031	80.0
2050K/RIB	2050	80.7
2070K/RIB	2070	81.5
2080K/RIB	2080	81.9
2100K/RIB	2100	82.7
2115K/RIB	2115	83.3
2120K/RIB	2120	83.5
2145K/RIB	2145	84.4
2164K/RIB	2164	85.2
2170K/RIB	2170	85.4

Part No.	Effective Length (mm)	Effective Length (inches)
2205K/RIB	2205	86.8
2217K/RIB	2217	87.3
2225K/RIB	2225	87.6
2236K/RIB	2236	88.0
2245K/RIB	2245	88.4
2257K/RIB	2257	88.9
2300K/RIB	2300	90.6
2330K/RIB	2330	91.7
2355K/RIB	2355	92.7
2385K/RIB	2385	93.9
2391K/RIB	2391	94.1
2440K/RIB	2440	96.1
2460K/RIB	2460	96.9
2480K/RIB	2480	97.6
2515K/RIB	2515	99.0
2530K/RIB	2530	99.6
2540K/RIB	2540	100.0
2585K/RIB	2585	101.8
2612K/RIB	2612	102.8
2680K/RIB	2680	105.5
2835K/RIB	2835	111.6
2967K/RIB	2967	116.8
4122K/RIB	4122	162.3

L - SECTION

Part No.	Effective Length (mm)	Effective Length (inches)
954L/RIB	954	37.6
991L/RIB	991	39.0
1075L/RIB	1075	42.3
1194L/RIB	1194	47.0
1219L/RIB	1219	48.0
1270L/RIB	1270	50.0
1295L/RIB	1295	51.0
1333L/RIB	1333	52.5
1371L/RIB	1371	54.0
1397L/RIB	1397	55.0
1422L/RIB	1422	56.0
1480L/RIB	1480	58.3
1562L/RIB	1562	61.5
1613L/RIB	1613	63.5
1664L/RIB	1664	65.5
1715L/RIB	1715	67.5
1764L/RIB	1764	69.4
1803L/RIB	1803	71.0
1841L/RIB	1841	72.5

Part No.	Effective Length (mm)	Effective Length (inches)
1943L/RIB	1943	76.5
1981L/RIB	1981	78.0
2020L/RIB	2020	79.5
2055L/RIB	2055	80.9
2070L/RIB	2070	81.5
2096L/RIB	2096	82.5
2134L/RIB	2134	84.0
2197L/RIB	2197	86.5
2235L/RIB	2235	88.0
2324L/RIB	2324	91.5
2362L/RIB	2362	93.0
2477L/RIB	2477	97.5
2515L/RIB	2515	99.0
2705L/RIB	2705	106.5
2743L/RIB	2743	108.0
2845L/RIB	2845	112.0
2895L/RIB	2895	114.0
2921L/RIB	2921	115.0
2997L/RIB	2997	118.0

Part No.	Effective Length (mm)	Effective Length (inches)
3086L/RIB	3086	121.5
3124L/RIB	3124	123.0
3289L/RIB	3289	129.5
3327L/RIB	3327	131.0
3492L/RIB	3492	137.5
3630L/RIB	3630	142.9
3696L/RIB	3696	145.5
4051L/RIB	4051	159.5
4191L/RIB	4191	165.0
4318L/RIB	4318	170.0
4470L/RIB	4470	176.0
4622L/RIB	4622	182.0
5029L/RIB	5029	198.0
5385L/RIB	5385	212.0
6096L/RIB	6096	240.0
6500L/RIB	6500	255.9
7055L/RIB	7055	277.8

M - SECTION

Part No.	Nominal Effective Length (mm)	Nominal Effective Length (inches)
2286M/RIB	2286	90.0
2388M/RIB	2388	94.0
2515M/RIB	2515	99.0
2693M/RIB	2693	106.0
2832M/RIB	2832	111.5
2921M/RIB	2921	115.0
3010M/RIB	3010	118.5
3124M/RIB	3124	123.0
3327M/RIB	3327	131.0
3531M/RIB	3531	139.0

Part No.	Nominal Effective Length (mm)	Nominal Effective Length (inches)
3734M/RIB	3734	147.0
4089M/RIB	4089	161.0
4191M/RIB	4191	165.0
4470M/RIB	4470	176.0
4648M/RIB	4648	183.0
5029M/RIB	5029	198.0
5410M/RIB	5410	213.0
6121M/RIB	6121	241.0
6502M/RIB	6502	256.0
6883M/RIB	6883	271.0

Part No.	Nominal Effective Length (mm)	Nominal Effective Length (inches)
7646M/RIB	7646	301.0
8408M/RIB	8408	331.0
9169M/RIB	9169	361.0
9931M/RIB	9931	391.0
10693M/RIB	10693	421.0
12217M/RIB	12217	481.0
13741M/RIB	13741	541.0
15266M/RIB	15266	601.0



“We are proud to be a European manufacturer; it is a privilege to supply our products to some of the world’s most prestigious original equipment manufacturers in the Agricultural, Automotive, Construction, Industrial and Motor Sport sectors”.



“Our distributor network is vital to the continued global growth of the DUNLOP brand and our valued distributor partners form the perfect link between manufacturer and end user”.



“Our commitment to our staff, our customers and the environment is of paramount importance to our company, we will continue to develop our organisational skills to further enhance our company’s potential, to engage in sustainable practices and anticipate the needs and expectations of our customers”.



“We love our products”.

Ray Mifsud, Managing Director.

A handwritten signature in black ink, appearing to read 'R. Mifsud'.

#WeLoveOurProducts





TRANSMISSIONS

DUNLOP BTL Ltd, MPT House, Brunswick Road, Cobbs Wood Industrial Estate, Ashford, Kent TN23 1EL, UK
T: +44 (0)1233 663340 • F: +44 (0)1233 664440 • E: sales@dunlopctl.com • W: www.dunlopctl.com

DUNLOP™ and the Flying D device™ are used under licence by DUNLOP BTL Ltd.